

**IFF**  
AMBER XTREME™

## Demonstration Formulas

Xtreme Power.  
Xtreme Performance.

# What if we let our senses guide us?

## Amber Xtreme™

Formula 16000	6
Formula 16001	8
Formula 16014	10
Formula 16015	12
Formula 16016	14

**Disclaimer** - The IFF Formulas that are shown in this booklet are offered as an aid to the Perfumer's creativity and have no regulatory significance. The recommended end use and dosage levels of these Demo Formulas are shown as a guidance only. This information should not be relied upon as any warranty of the ingredient's performance in any end product. It is the perfumer's responsibility to fully test and satisfy themselves that the ingredient is suitable for use in the customer's end product. The user should also check the safe use of the Demo Formulas with IFRA, the customer's and local regulatory requirements.

# Amber Xtreme™

## Background

The discovery of Amber Xtreme™ in 2001 represents a triumph of structure-odor relationship intuition. It was a serendipitous discovery that manipulating Galbanum molecules into an ether moiety could lead to molecules with an amber odor. Pursuing this idea on diverse backbones, our scientists identified a plethora of new molecules. The insights gained from this unique structure-odor research led to the discovery of Amber Xtreme™, a uniquely powerful amber woody molecule. With expertise and perseverance, our chemists and process engineers developed a commercially viable process for Amber Xtreme™. A new star was born.

## Great combinations

Cashmeran®, Timbersilk™, Ambrettolide, Ambermor

## Useful in creating

Almost any fragrance type to boost its performance in all stages.

## Why we love it

"The power of Amber Xtreme™ is like nothing else."

"Its unique performance properties make Amber Xtreme™ an ingredient that provides unprecedented creative opportunities."

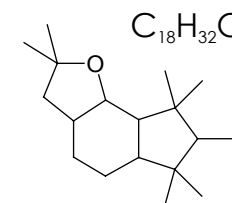
**IFF**

# Amber Xtreme™

Decahydro-2,2,6,6,7,8,8-heptamethyl indenofuran



**AMBER**  
Amber, Woody, Dry



IPC NUMBER 12425

<b>OLFACTIVE TERRITORY</b> Primitive		<b>OLFACTORY DESCRIPTION</b> Amber woody ingredient that provides extraordinary performance to almost any fragrance type.	
<b>RECOMMENDED USES</b> Fine fragrance, fabric care, personal care, home care, candles.		<b>VISUAL DESCRIPTION</b> Colorless to pale yellow liquid	<b>GC SUMMARY</b> Sum isomers min 94%
<b>TYPICAL USE LEVEL</b> Traces to 0.5%	<b>MOLECULAR WEIGHT</b> 264	<b>FLASHPOINT</b> 128°C	<b>SUBSTANTIVITY</b> >1 week
<b>CAS NUMBER</b> 476332-65-7/ 647828-16-8	<b>REACH REGISTRATION</b> 01-0000018977-51	<b>VAPOR PRESSURE</b> 0.005516 mm Hg @ 23°C	<b>LOG P</b> 7.1

PRODUCT	PERFORMANCE	STABILITY	NOTE IMPACT		
Fine Fragrance	Very Good	Very Good			
Acid Cleaner	Very Good	Very Good	Top		
Liquid Detergent	Excellent	Very Good			
Powder Detergent	Excellent	Very Good			
Fabric Conditioner	Excellent	Very Good	Heart		
AP Deo	Very Good	Very Good			
Shampoo	Very Good	Very Good			
Soap	Very Good	Very Good	Base		
Candles	Good	Very Good			
Bleach	Good	Good			
				Low	Med
					High

# Amber Xtreme™

Formula 16000

FORMULA 16000

## Amber Xtreme™

The addition of Amber Xtreme™ accentuates the warm cozy amber body of the accord and creates a sweet cookies-and-cream aspect.

### Top Notes

Eucalyptol, Fresh

### Middle Notes

Floral, Sweet

### Base Notes

Woody, Tobacco, Vanilla

### Application

Paraffin Wax at 7.0%

			(-)	(+)
Citrus	Orange Oil Tarocco Italy 5x Decol		0.30	
	Camphor		0.40	
Herbal	Eucalyptol		0.30	
	Iso Bornyl Acetate		8.20	
	Iso Butavan 10%		0.30	
Floral	Alpha Terpineol	IFF	3.50	
	Floralozone	IFF	0.60	
Fruity	Maltol Iso Butyl 10%		0.40	
	Veltol Plus		1.10	
Musk	Galaxolide® Undiluted	IFF	11.00	
Amber	<b>Amber Xtreme™ 10%</b>	<b>IFF</b>		<b>3.00</b>
	Cashmeran®	IFF	0.80	
	Baccanol®	IFF	2.30	
Woody	Koavone®	IFF	7.00	
	Methyl Ionone Gamma A	IFF	1.30	
	Sanjinol 10%	IFF	0.30	
	Timbersilk™	IFF	10.00	
	Vertenex®	IFF	17.50	
Powdery (sweet)	Vanillin		0.70	
Tobacco/hay	Aubepine		1.30	
	Coumarin		0.70	
	Diocetyl Adipate		15.00	
	Isopar H		17.00	14.00
	TOTAL:		100.00	100.00

# Amber Xtreme™

Formula 16001

FORMULA 16001

## Amber Xtreme™

Amber Xtreme™ helps lift the fresh juicy citrus notes with a clean fresh watery body. The citrus enhancing effect without imparting too much of the amber, shows the versatility of this molecule.

### Top Notes

Citrus, Herbal

### Middle Notes

Jasmine, Rose, Floral

### Base Notes

Amber, Woody, Powdery

### Application

Paraffin Wax at 7.0%

			(-)	(+)
Citrus	Herbalime™	IFF	6.00	
Herbal	Linalool		9.00	
	Benzyl Acetate		1.00	
	Benzyl Benzoate		1.60	
Floral	Hexyl Cinnamic Aldehyde		5.35	
	Kharisma® Super	IFF	1.00	
	Phenyl Ethyl Alcohol		0.90	
Musk	Galaxolide® Undiluted	IFF	10.00	
	Musk Z4 1%	IFF	0.25	
	<b>Amber Xtreme™</b>	<b>IFF</b>		<b>0.10</b>
Amber	Cashmeran®	IFF	0.20	
	Labdanum Resoid 10%	LMR	0.60	
	Cedarwood White	IFF	0.30	
Woody	Karmawood™	IFF	0.50	
	Mysantol 10%	IFF	1.00	
	Patchone		1.50	
	Sanjinol	IFF	7.50	
	Timbersilk™	IFF	5.00	
Mossy	Veramoss 10%	IFF	0.90	
Powdery (sweet)	Bicyclononalactone	IFF	0.40	
	Vanillin		0.35	
	Iso Propyl Myristate		46.65	46.55
		TOTAL:	100.00	100.00

# Amber Xtreme™

Formula 16014

## Amber Xtreme™

Amber Xtreme™ provides an overall push to the citrus complex, defining more of the lemon rind/zest, pulpy fresh note. This resembles the odor which is emitted via the steam in a hot cup of tea with lemon.

### Top Notes

Fresh, Citrus



### Middle Notes

Fruity, Green Leafy

### Base Notes

Balsamic, Woody, Musk



### Application

20% in EVA (Ethylene Vinylacetate) Beads

## FORMULA 16014

		(-)	(+)	
Aldehydic	Aldehyde C-8		0.55	
	Citral		0.70	
	Citrus Oil Distilled		10.30	
Citrus	Litsea Cubeba Oil		0.13	
	Mandarin Oil		6.90	
	Terpinyl Acetate	IFF	7.60	
	Camphor		0.13	
Herbal	Linalool		5.45	
	Tetrahydro Linalool		6.90	
	Thyme Oil White Spain 10%		0.40	
	Hexenyl Acetate, Cis-3		0.10	
Green	Nonadienal,2-tr-6-cis 1%		0.40	
	Vertoliff	IFF	0.40	
	Benzyl Acetate		0.80	
	Citronellol 950	IFF	1.00	
Floral	Cyclemax™ 10%	IFF	1.13	
	Florifol		0.70	
	Geraniol 980	IFF	4.94	
	Helional® 10%	IFF	0.35	
	Hexyl Cinnamic Aldehyde		13.70	
	Kharisma® Super	IFF	5.50	
	Meijiff™	IFF	0.13	
	Nerol 700		0.13	
	Petitgrain Oil Paraguay Terpeneless	LMR	0.15	
	Phenyl Ethyl Alcohol		4.10	
	Fruity	Delta Damascone	IFF	0.33
Hexalon		IFF	0.13	
Balsamic	Benzyl Salicylate		3.50	
	Hexyl Salicylate		2.10	
Musk	Ethylene Brassylate	IFF	5.50	
	Muscemor 10%	IFF	1.60	
Amber	<b>Amber Xtreme™ 1%</b>	<b>IFF</b>	<b>0.28</b>	
	Ambermor 10%	IFF	0.65	
	Cashmeran®	IFF	0.27	
Woody	Ionone Beta		0.55	
	Timbersilk™	IFF	9.00	
Tobacco/Hay	Coumarin		1.10	
	DPG		2.68	2.40
	TOTAL:		100.00	100.00

# Amber Xtreme™

Formula 16015

FORMULA 16015

## Amber Xtreme™

Amber Xtreme™ provides lift to the warm cinnamon, baked apple pie note and becomes a more natural apple with more body and simply an overall, fuller fragrance. Take note of the use of Apple Oliffac in this accord.

### Top Notes

Fruity, Fresh



### Middle Notes

Crisp, Green Apple

### Base Notes

Soft Vanilla, Amber, Spicy



### Application

20% in EVA (Ethylene Vinylacetate) Beads

			(-)	(+)
Green	Liffarome™	IFF	0.20	
	Amyl Benzoate		0.10	
Floral	Phenoxanol®	IFF	3.00	
	Violiff	IFF	0.20	
Fruity	Aldehyde C-18		0.20	
	Apple Oliffac	IFF	10.00	
	Diethyl Malonate		2.20	
	Ethyl-2-methyl Butyrate		0.60	
	Fructose	IFF	10.00	
	Manzanate		0.65	
	Undecalactone Gamma	IFF	2.00	
Spicy	Verdox™	IFF	20.00	
	Cinnamic Alcohol		0.60	
	Cinnamic Aldehyde		3.00	
Balsamic	Cinnamon Leaf Ceylon		1.00	
	Eugenol		2.50	
Balsamic	Methyl Cinnamate		0.50	
Amber	<b>Amber Xtreme™ 10%</b>	<b>IFF</b>		<b>0.10</b>
Powdery (sweet)	Bicyclononalactone	IFF	0.55	
	Ethyl Vanillin		0.40	
Tobacco/Hay	Vanillin		1.00	
	Hexalactone, Gamma		0.30	
	Methoxy-3-meth-1-butanol,3		41.00	40.09
		TOTAL:	100.00	100.00

# Amber Xtreme™

Formula 16016

FORMULA 16016

## Amber Xtreme™

Amber Xtreme™ adds a natural rawhide leathery note to this car freshener scent and adds to its overall longevity. Take note of the use of Oud Oliffac in this accord.

### Top Notes

Fresh

### Middle Notes

Amber, Leather

### Base Notes

Smoky, Earthy, Mossy

### Application

30% Porous Filter Pad (e.g for car air fresheners)

			(-)	(+)
Aldehydic	Aldehyde C-10		0.15	
Citrus	Linalyl Acetate		5.00	
Herbal	Dimetol		33.00	
Fresh	Methyl Benzoate 10%		0.10	
Floral	Floralozone	IFF	4.00	
	Hydroxycitronellal		1.00	
	Jasmal	IFF	1.00	
	Phenyl Ethyl Alcohol		5.00	
Spicy	Iso Eugenol		0.10	
Musk	Applelide	IFF	6.00	
	Zenolide	IFF	0.50	
Amber	<b>Amber Xtreme™</b>	<b>IFF</b>		<b>0.10</b>
	Ambrain Ex Gum Labdanum 1%		0.05	
	Cedarwood Oil China		1.00	
	Cedramber®	IFF	1.00	
	Koavone®	IFF	34.20	
Woody	Oud Oliffac	IFF	0.50	
	Patchouli Oil Redist	LMR	0.20	
	Santaliff™	IFF	0.50	
	Vertenex®	IFF	3.00	
Mossy	Dimethyl Phenol, 2,3- 10%		1.00	
	Iso Butyl Quinoline 10%	IFF	0.30	
Powdery (sweet)	Bicyclononalactone	IFF	0.50	
	Vanillin		1.00	
	DPG		0.90	0.80
		<b>TOTAL:</b>	<b>100.00</b>	<b>100.00</b>



We are the  
catalyst for  
discoveries that  
spark the senses  
and transform  
the everyday.

**IFF**

International Flavors & Fragrances Inc.