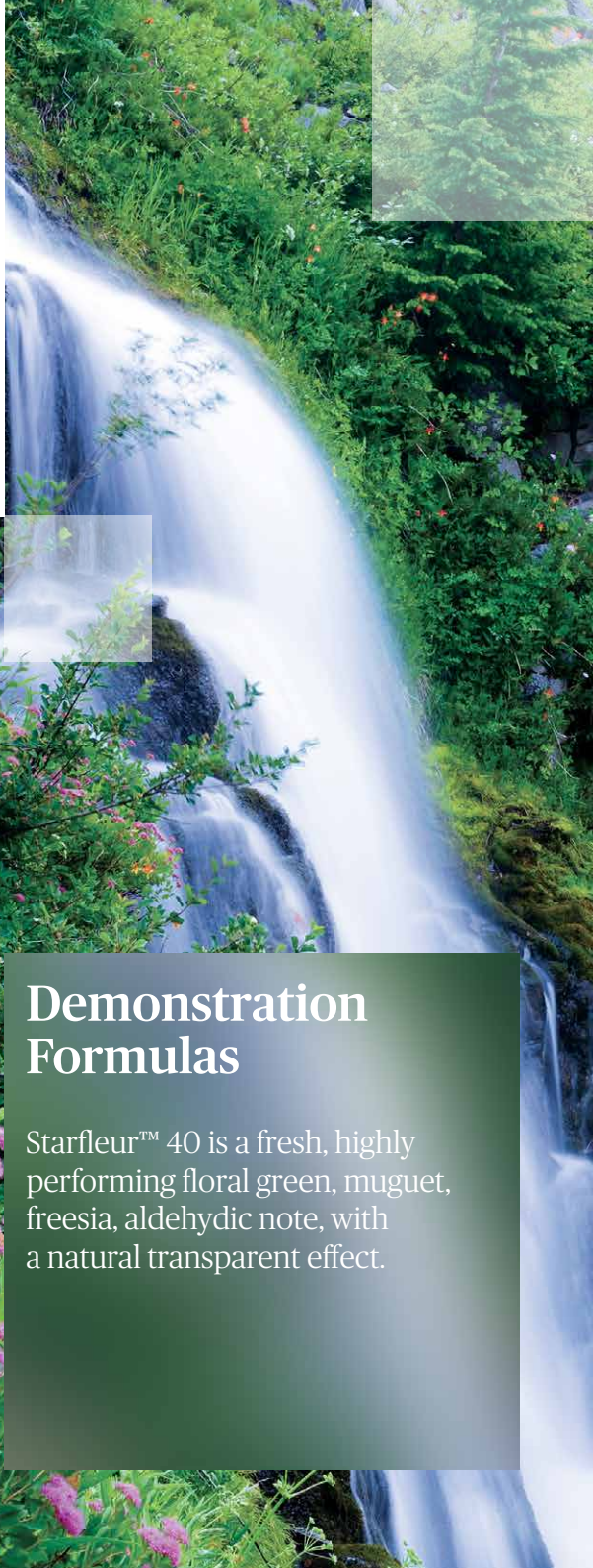


IFF STARFLEUR™ 40



Demonstration Formulas

Starfleur™ 40 is a fresh, highly performing floral green, muguet, freesia, aldehydic note, with a natural transparent effect.

What if we could start a revolution in sensorial science?

Starfleur™ 40

Formula 16060	6
Formula 16061	8
Formula 16062	10
Formula 16063	12
Formula 16064	14

Disclaimer - The IFF Formulas that are shown in this booklet are offered as an aid to the Perfumer's creativity and have no regulatory significance. The recommended end use and dosage levels of these Demo Formulas are shown as a guidance only. This information should not be relied upon as any warranty of the ingredient's performance in any end product. It is the perfumer's responsibility to fully test and satisfy themselves that the ingredient is suitable for use in the customer's end product. The user should also check the safe use of the Demo Formulas with IFRA, the customer's and local regulatory requirements.

Starfleur™ 40

Background

In search for molecules in the Muguet family, many ingredients were synthesized. Starfleur™ was chosen to be taken forward based on its performance and odor profile. IFF patented it in 2010.

Great combinations

Floral Super, Cyclemax™, Beta Ionone Epoxide, Kharismal Super, Amber Xtreme™.

Useful in creating

Fresh green florals, Muguet, Lily and Freesia notes, lemon and mandarin fresh citrus types and watery transparent notes.

Why we love it

"It is a clear, crisp and clean straightforward note."

"Has a natural impression of spring flowers and gives volume and body to a fragrance."

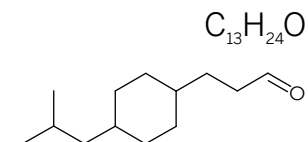
IFF

Starfleur™ 40

3-[4-(2-Methylpropyl)cyclohexyl]propanal in Muguesia



FLORAL
Muguet, Fresh, Freesia



IPC NUMBER 30218203

OLFACTIVE TERRITORY Nature	OLFACTORY DESCRIPTION A fresh, highly performing floral green, muguet, freesia, aldehydic note, with a natural transparent effect. Starfleur™ 40 rounds off green aldehydic muguet notes very well.		
RECOMMENDED USES Fine fragrance, personal care, fabric care, home care	VISUAL DESCRIPTION Clear colorless liquid	GC SUMMARY See product data sheet	
TYPICAL USE LEVEL Up to 5%	MOLECULAR WEIGHT 196*	FLASHPOINT 94° C	SUBSTANTIVITY >72 hours
CAS NUMBER 1315250-65-7 1315250-67-9 56836-93-2	REACH REGISTRATION Blend	VAPOR PRESSURE 0.022206 mm Hg @ 23° C*	LOG P 4.9*

PRODUCT	PERFORMANCE	STABILITY	NOTE IMPACT			
Fine Fragrance	Very Good	Good	Top	○	○	●
Acid Cleaner	Moderate	Moderate				
Liquid Detergent	Very Good	Good				
Powder Detergent	Moderate	Moderate				
Fabric Conditioner	Very Good	Good	Heart	○	●	○
AP Deo	Good	Moderate				
Shampoo	Very Good	Good				
Soap	Good	Good				
Candles	Good	Good				
Bleach	Poor	Poor	Base	●	○	○
				Low	Med	High

*based on neat 3-[4-(2-Methylpropyl)cyclohexyl]propanal

Starfleur™ 40

Formula 16060

FORMULA 16060

Starfleur™ 40

Starfleur™ 40 provides floral body to the fragrance, softening the amber and fruity notes and giving a more robust character.

Top Notes

Apple, Citrus, Pineapple

Middle Notes

Floral, Rose, Fruity

Base Notes

Sandalwood, Patchouli, Amber

Application

Liquid Detergent 0.6%

			(-)	(+)
Aldehydic	Aldehyde C-10		10.00	
	Dihydro Myrcenol		180.00	
Citrus	Lemonile		15.00	
	Orange Oil CP		35.00	
Herbal	Linalool		55.00	
Fresh	Decenal		2.50	
Green	Galbascone High Alpha	IFF	0.50	
	Diphenyl Oxide		5.00	
Floral	Geraniol 980	IFF	55.00	
	Styralyl Acetate		16.00	
	Starfleur™ 40	IFF		15.00
	Hexyl Acetate	IFF	5.00	
	Allyl Cyclohexyl Prop		25.00	
	Cyclacet®	IFF	180.00	
Fruity	Delta Damascone	IFF	2.50	
	Ethyl-2-Methyl Butyrate		6.00	
	Manzanate		8.00	
	Verdox™	IFF	55.00	
Spicy	Prismantol	IFF	0.50	
Musk	Zenolide	IFF	25.00	
	Amber Xtreme™	IFF	4.00	
Amber	Cashmeran®	IFF	25.00	
	Cetalor	IFF	5.00	
Woody	Timbersilk™	IFF	160.00	
	Koavone®	IFF	10.00	
	Mysantol	IFF	20.00	
	Patchouli Oil Light	LMR	10.00	
	Sanjinol	IFF	15.00	
	Vertenex®	IFF	55.00	
	DPG		15.00	0.00
	TOTAL:		1000.00	1000.00

Starfleur™ 40

Formula 16061

FORMULA 16061

Starfleur™ 40

Starfleur™ 40 enhances the floral part of the fragrance. The green, aldehydic character freshens the rose and violet, giving a fuller, brighter effect.

Top Notes

Aldehydic, Citrus, Green

Middle Notes

Jasmin, Rose, Violet

Base Notes

Musk, Patchouli, Amber

Application

Fabric Softener 1.2%

			(-)	(+)
Aldehydic	Intreleven Aldehyde	IFF	15.00	
	Aldehyde C-12 Lauric		60.00	
Citrus	Dihydro Myrcenol		160.00	
	Lemonile		6.00	
Fresh	Aldehyde C-12 MNA		60.00	
Green	Galbascone High Alpha	IFF	2.00	
	Vertoliff	IFF	40.00	
Floral	Benzyl Acetate		65.00	
	Phenyl Ethyl Alcohol		50.00	
	Phenoxanol®	IFF	60.00	
	Rose Oxide		3.00	
	Styralyl Acetate		50.00	
	Violiff 10%	IFF	10.00	
	Starfleur™ 40	IFF		15.00
Fruity	Hexyl Acetate	IFF	100.00	
	Aldehyde C-18		15.00	
	Manzanate		5.00	
Spicy	Eugenol		12.00	
Musk	Muscemor 10%	IFF	15.00	
Amber	Cetalor	IFF	2.00	
	Timbersilk™	IFF	100.00	
Woody	Methyl Ionone Gamma Coeur	IFF	100.00	
	Mysantol	IFF	5.00	
	Patchouli Oil Light	LMR	20.00	
	Sanjinol	IFF	30.00	
	DPG		15.00	0.00
		TOTAL:	1000.00	1000.00

Starfleur™ 40

Formula 16062

FORMULA 16062

Starfleur™ 40

Brings volume and enhances the oriental gourmand aspect of the fragrance.

Top Notes

Aromatic Citrus, Lavender, Aniseed, Bergamot

Middle Notes

Rose, Jasmine, Muguet, Cedarwood, Sandalwood, Vetyver, Patchouli

Base Notes

Oriental, Musk, Vanilla, Amber

Application

Shower Gel 1.0%

		(-)	(+)
Citrus	Dihydro Myrcenol	40.00	
	Linalyl Acetate	100.00	
Herbal	Anethole USP	4.00	
	Linalool	120.00	
Green	Galbascone	IFF	1.00
	Hexenol, cis-3		1.00
	Liffarome™	IFF	3.00
	Damascenone 10%	IFF	4.00
Floral	Floralozone	IFF	10.00
	Dihydro Beta Ionone	IFF	12.00
	Methyl Dihydro Jasmonate		200.00
	Phenoxanol®	IFF	40.00
	Rose Essential 10%	LMR	1.00
	Starfleur™ 40	IFF	10.00
Fruity	VeltoI Plus 10%		4.00
Aromatic	Lavandin Oil Abrial Org	LMR	5.00
Gourmand	Benzaldehyde		3.00
Balsamic	Hexyl Salicylate		70.00
Musk	Ambrettolide	IFF	10.00
	Amber Xtreme™ 10%	IFF	7.00
Amber	Cashmeran®	IFF	45.00
	Grisalva	IFF	7.00
	Timbersilk™	IFF	150.00
Woody	Patchouli Oil Light	LMR	6.00
	Sanjinol	IFF	15.00
	Vetivert Oil Haiti	LMR	2.00
Fougère	Heliotropine		5.00
	Bicyclononalactone	IFF	9.00
Powdery (sweet)	Vanillin		6.00
	DPG	120.00	110.00
	TOTAL:	1000.00	1000.00

Starfleur™ 40

Formula 16063

FORMULA 16063

Starfleur™ 40

Starfleur™ 40 brings volume and depth to the fragrance and adds sophistication to the top note.

Top Notes

Aromatic Citrus, Lavender, Sage Clary, Bergamot

Middle Notes

Rose, Jasmine, Muguet, Cedarwood, Sandalwood, Vetiver, Patchouli

Base Notes

Oriental, Musk, Vanilla, Amber

Application

Fine Fragrance 15%

			(-)	(+)
Citrus	Bergamot Oil C'less MD		100.00	
	Dihydro Myrcenol		20.00	
Herbal	Clary Sage Oil French	LMR	1.00	
	Galbascone	IFF	1.00	
Green	Hexenol, cis-3		1.00	
	Liffarome™	IFF	3.00	
	Damascenone 10%	IFF	8.00	
	Floralozone	IFF	5.00	
Floral	Dihydro Beta Ionone	IFF	15.00	
	Kharisma® Super	IFF	100.00	
	Phenoxanol®	IFF	30.00	
	Rose Essential™ 10%	LMR	2.00	
	Starfleur™ 40	IFF		5.00
Fruity	Veltol Plus 10%		6.00	
Aromatic	Lavandin Oil	LMR	7.00	
Gourmand	Benzaldehyde		3.00	
Musk	Ambrettolide	IFF	10.00	
	Ambermor	IFF	8.00	
Amber	Cashmeran®	IFF	70.00	
	Grisalva	IFF	10.00	
	Timbersilk™	IFF	300.00	
Woody	Patchouli Oil Light	LMR	8.00	
	Sanjinol	IFF	20.00	
	Vetivert Oil Haiti	LMR	10.00	
Fougère	Heliotropine		5.00	
Powdery (sweet)	Bicyclononalactone	IFF	9.00	
	Vanillin		8.00	
	DPG		240.00	235.00
	TOTAL:		1000.00	1000.00

Starfleur™ 40

Formula 16064

FORMULA 16064

Starfleur™ 40

The addition of Starfleur™ 40 lifts the floral body, creating a brighter and richer fragrance.

Top Notes

Citrus, Grapefruit

Middle Notes

Jasmin, Rose Muguet

Base Notes

Sandalwood, Musk

Application

Shampoo 0.8%

			(-)	(+)
Citrus	Pomelene 0.01 PCT IPM 0.1%		2.00	
Herbal	Linalool		80.00	
Green	Hexenol, cis-3		2.00	
	Liffarome™	IFF	2.00	
Floral	Benzyl Acetate		20.00	
	Geraniol 980	IFF	25.00	
	Helional®	IFF	5.00	
	Hexyl Cinnamic Aldehyde		150.00	
	Hydroxycitronellal		30.00	
	Kharisma® Super	IFF	100.00	
	Peomosa	IFF	10.00	
	Phenyl Ethyl Alcohol		15.00	
	Styralyl Acetate		2.00	
	Ylang III Oil	LMR	5.00	
	Starfleur™ 40	IFF		12.00
Fruity	Cassifix® 10%	IFF	3.00	
	Cyclotene 0.1%		10.00	
	Undecalactone Gamma	IFF	10.00	
Musk	Galaxolide® 50%	IFF	245.00	
	Hexadecanolide	IFF	10.00	
Woody	Indisan		60.00	
	Iso E Super®	IFF	150.00	
	Methyl Ionone Gamma Coeur	IFF	25.00	
	Mysantol	IFF	15.00	
Powdery (sweet)	Bicyclononalactone	IFF	10.00	
Animalic	Indole 10%		2.00	
	DPG		12.00	
			TOTAL:	1000.00 1000.00

**We are the
catalyst for
discoveries that
spark the senses
and transform
the everyday.**

IFF

International Flavors & Fragrances Inc.